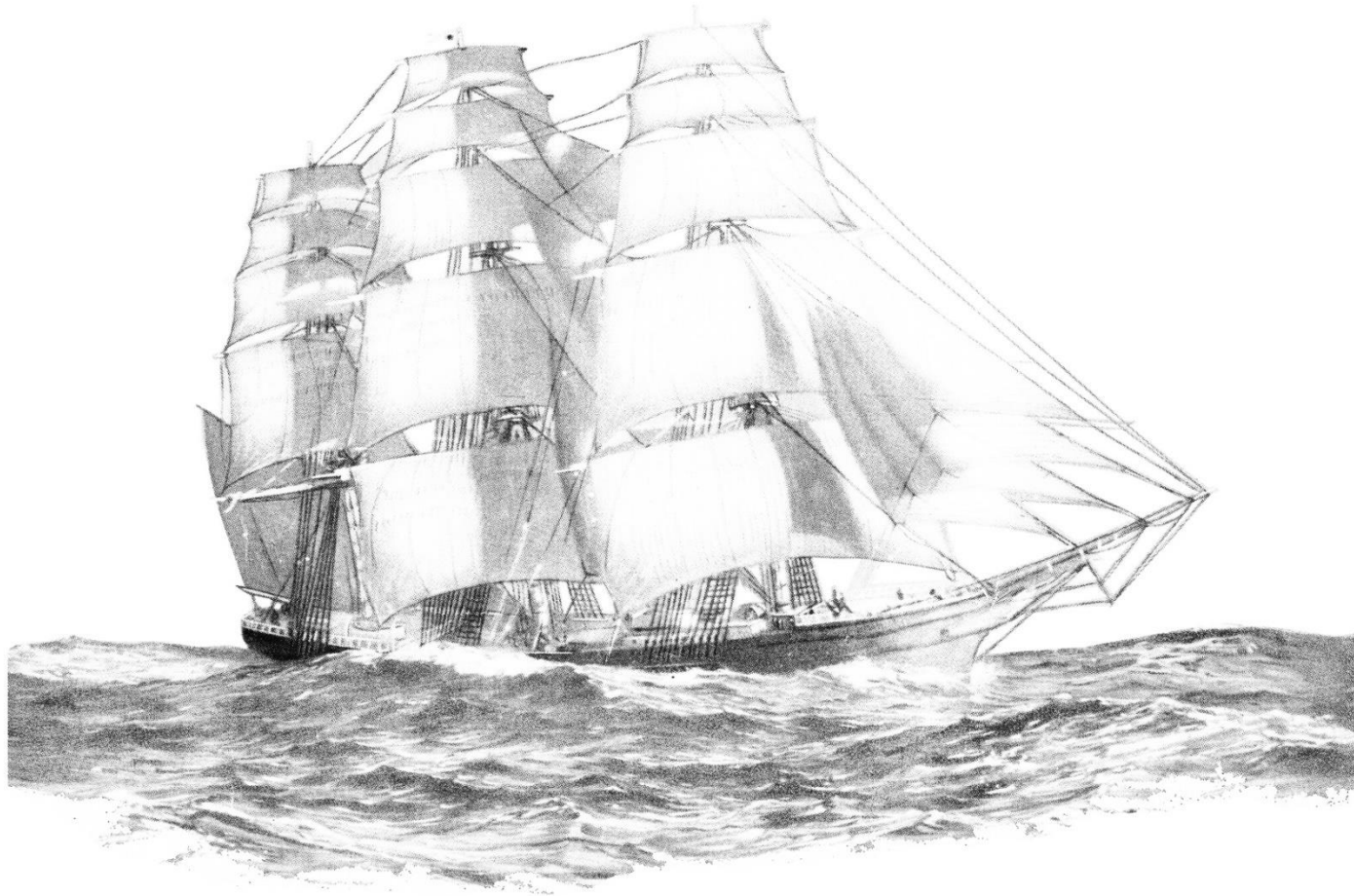


Show your seafaring colours – colour in your own ship!

This is the 'Lightning,' a Black Ball Royal Mail clipper, said to be the fastest wooden ship ever built!

Built in 1853, it was to burn and sink in Corio Bay 1869.



Share your finished masterpiece on social media by tagging #HeritageCentreMasterpiece
Facebook @geelongregionallibraries
Instagram @geelonglibraries

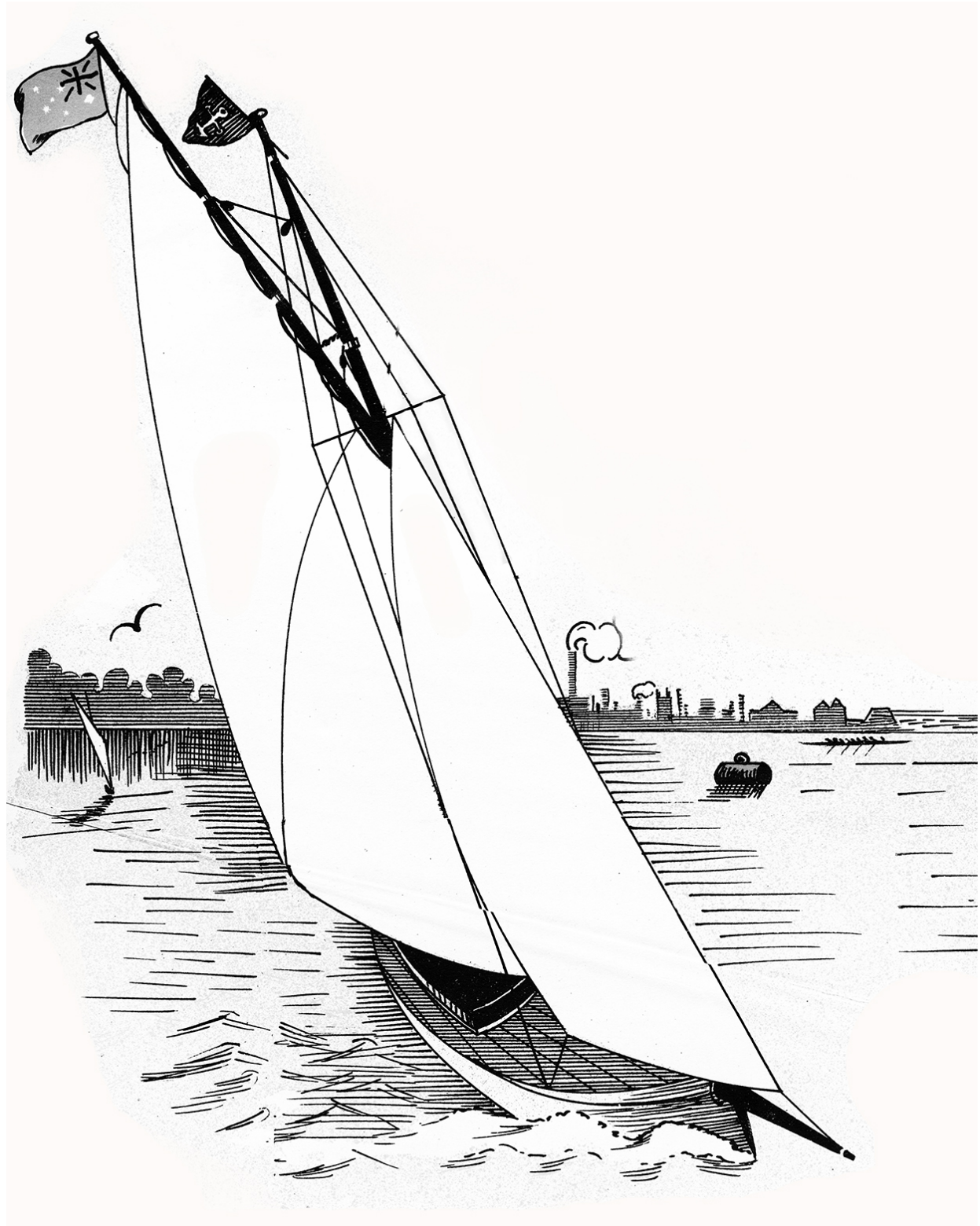
GEELONG
REGIONAL
LIBRARIES



GEELONG
LIBRARY
HERITAGE
CENTRE



Show your seafaring colours by colouring in your own ship!



Share your finished masterpiece on social media by tagging
#HeritageCentreMasterpiece
Facebook @geelongregionallibraries
Instagram @geelonglibraries

GEELONG
REGIONAL
LIBRARIES

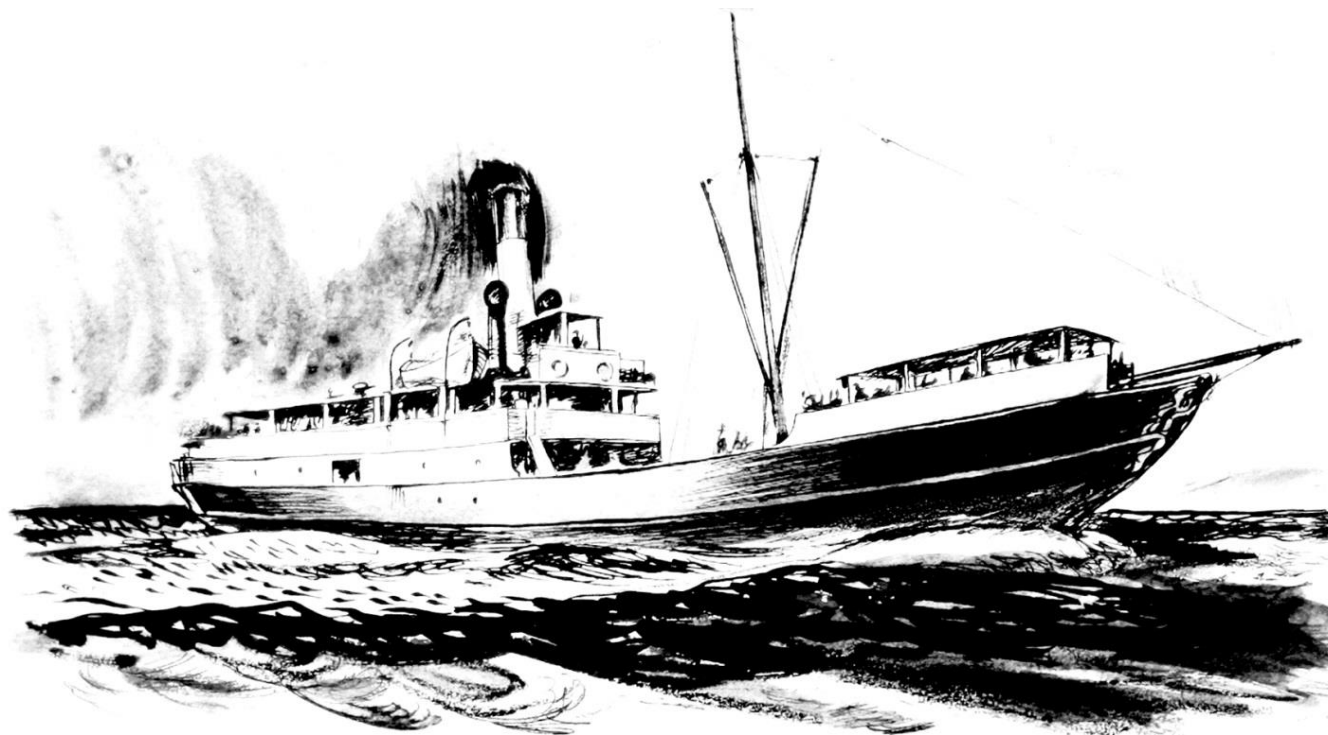


GEELONG
LIBRARY
HERITAGE
CENTRE



This is the *Edina* leaving Geelong with passengers on her last voyage in 1938.

What do you think Geelong would have looked like in those days? Draw your own background!



Share your finished masterpiece on social media by tagging #HeritageCentreMasterpiece
Facebook @geelongregionallibraries
Instagram @geelonglibraries